

THE ELECTRIC BICYCLE CO.™

"Tomorrow's Transport Today"™

Transporter Assembly Instructions

Your Transporter Tricycle will arrive in 2 cartons – tall skinny carton – Front Section / square squat carton – Rear Section

Front Section carton will include:

- Tricycle Front Section with motor.
- Tricycle rear basket.
- Rear basket cover.
- Tricycle front basket.
- Tricycle flag.
- Owners Manual.
- Pedals
- Safety vest
- Lock
- Rear battery lock

Rear Section carton will Include:

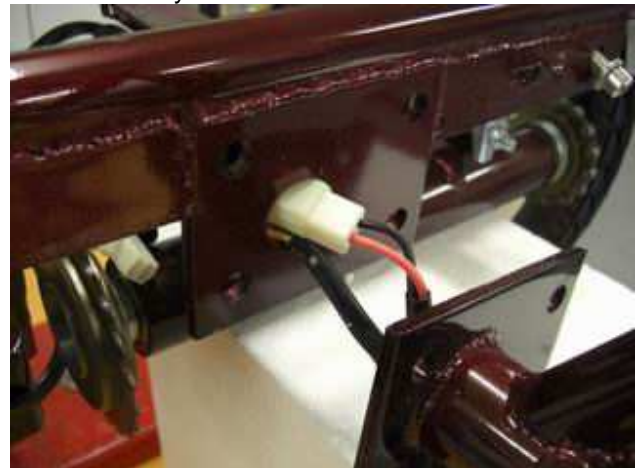
- Tricycle rear section
- Battery assembly
- Indicators / Taillight
- Side mirrors
- Charger
- Seat
- A shaped stabilizer arm

Empty contents of both cartons and check that ALL parts are accounted for.

Now you are ready to start assembly.



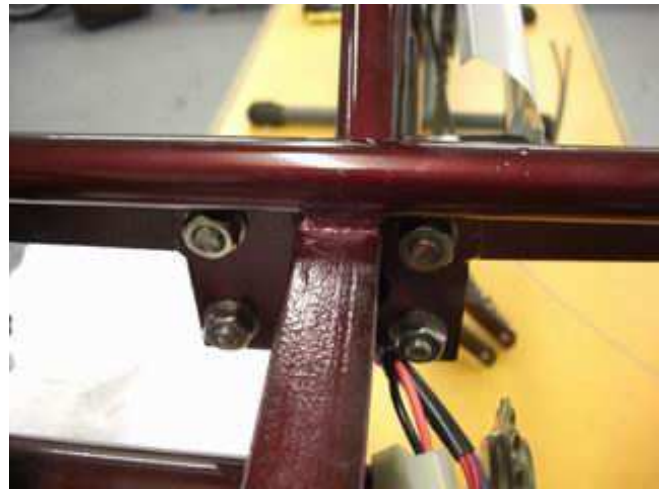
Remove all bubble wrap and any zip ties from both the front section and the rear section. Remove the batteries from the cradle and place them on the charger before you start the Trike build. They should be fully charged by the time you need them.



The first step is to attach the front section to the rear, this involves a few steps. The first step is to feed the Indicator and battery wires coming out of the frame in the front section through the corresponding hole in the rear section.



An easy way to stop the rear section from moving around while trying to do this is to sit the square block of foam that comes in the rear section box under the transfer axle.



Now you can easily feed the wires through the rear section and use the 4 bolts provided to join the front section to the rear section. *#Note Do not tighten these 4 main bolts at this time.*



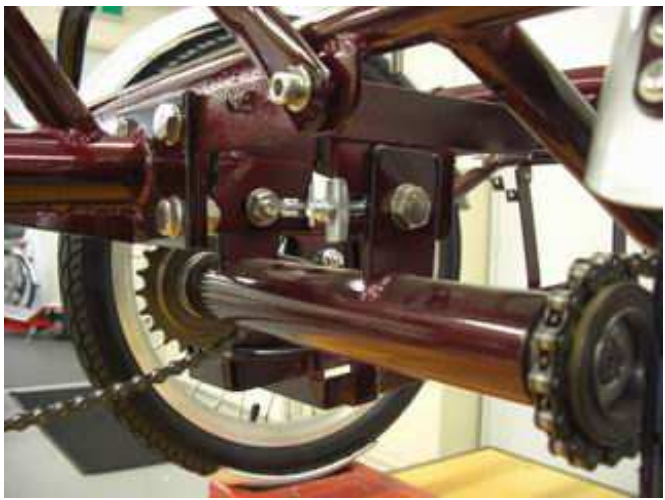
Now attach the A shaped Stabilizer arm, using and 6mm Alan Key and a 13mm Ring Spanner Tighten the 3 bolts. It's important to tighten the A-Frame before the 4 centre bolts as this ensures the front section and rear section line up perfectly.



Now you can use two 17mm open-end ring spanners to tighten the 4 centre bolts.



Once the two sections are securely joined, it's a good time to connect the Indicator and battery wires that we fed through the frame, connect the plugs and use zip ties to secure these plugs safely under the frame.



Fit the front section chain, and check the tension of both chains. You may need to adjust the transfer axle to achieve this.



You may also need to adjust the back left hand wheel accordingly to ensure both chains are equal tension.



Now is a good time to connect the cables for the rear brake and the gears. The left cable attaches to the gear shifter on the back left wheel. The right cable attaches to the expanding drum brake on the back right wheel.



Gear Cable: If you look at the inner hub gear changer on the back left wheel from underneath you'll see a screw. Undo that screw and allow the cover plate to drop off. Now you can feed the cable through and use and 10mm ring spanner to lock the cable in.



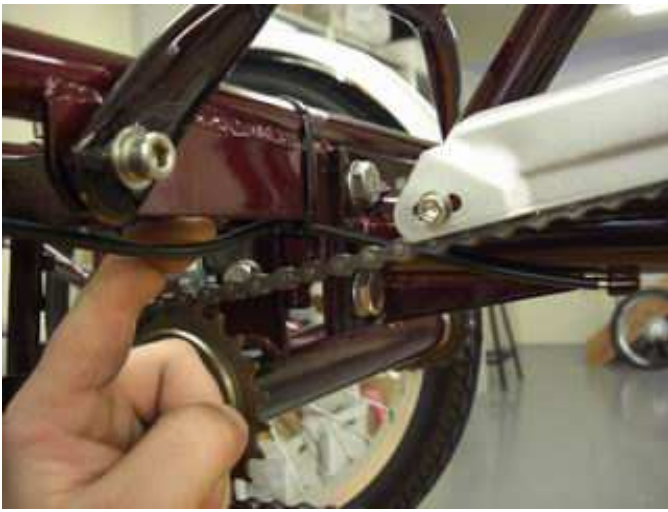
Once the cable is locked in put it in 2nd gear and look at the gear changer from above.



The Thick yellow line must sit between the two thin yellow lines when in 2nd gear.



Trim the cable so it's flush with the locking bolt allowing no more than a cm of cable to spare. We don't leave any spare to ensure that we can re-fit the cover plate over the top.



Brake Cable: Feed the cable through the outer provided. Guide it **over** the chain towards the back right wheel.



Poke the cable through the brass Brake adjuster. Ensure that you fit the spring between the adjuster and brake arm before locking up with appropriate tension using the 10mm nut. Be sure to secure both cables safely out of the way.



Now is a good time to fit the rear indicators and taillight. Attach using an 8mm ring-spanner.



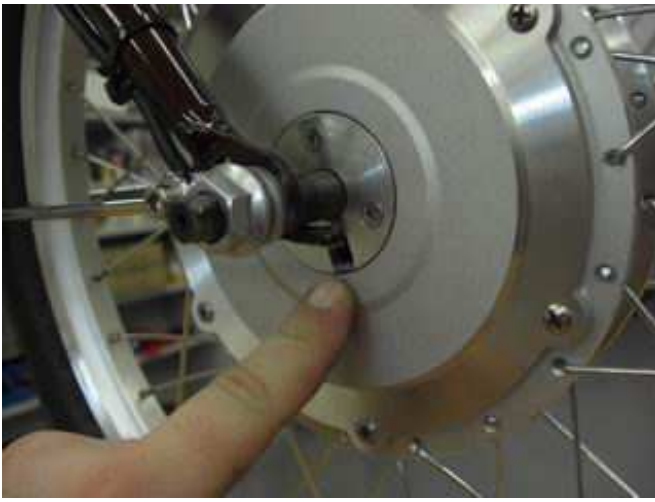
Once in place connect the plugs and secure excess wiring in a safe location under the frame using zip ties.



Fit the Pedals.



Attach rear battery lock.



Have a look at the motor wire coming out of the motor. It must exit the motor from below the front wheel axle. Make sure the axle nuts are nice and tight.



Secure the motor wire firmly alongside the right fork using zip ties.



Adjust the front brakes using a 5mm Alan Key.



The headstem plunger bolt is done to the correct tension to allow you to rotate the handlebars 90 degrees by brute force. If you find them too tight OR too loose then you will need the next step.

Remove the front headpiece. There are 5 screws that hold this headpiece in place. Remove the 2 screws that hold the rear headpiece in place. Now using a 6mm Alan key tighten the handlebar plunger bolt.



Refit the headpiece ensuring no wires get pinched.



Assemble the Rear Basket. You'll find it easier if you fit the basket cover to the basket before you fit the basket to the bike.



Using the four 5mm bolts attach the rear baskets to the trike.



Attach the front basket



Finally fit the seat, the flag and the mirrors



Replace the batteries and take for a **TEST RIDE**